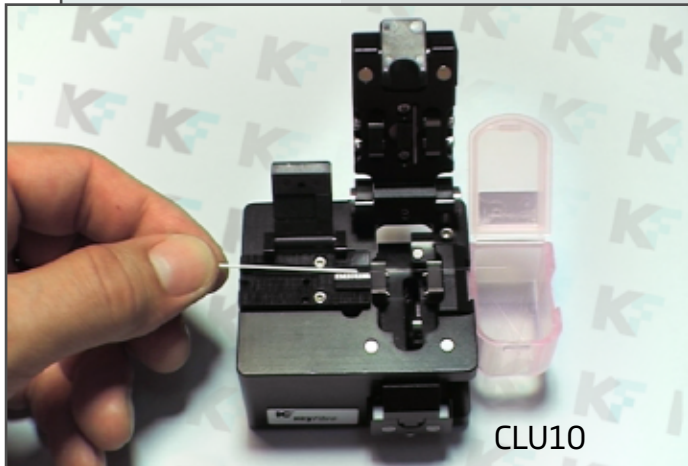




KeyQuick® KeyCleave® CLU10 High-Precision Universal Fiber Cleaver



CLU10

Description

KeyCleave® High Precision Universal Fiber Cleaver is an easy-to-use tool. With compact body, light weight and sliding function, it is especially useful for cleaving single fibres when joining by fusion or mechanical splices at outdoors or indoors.

KeyFibre's Universal Fiber Cleaver simplifies the operation and maintenance. With its excellent cleaving quality, it makes the best cost-to-performance in the field.

Applications

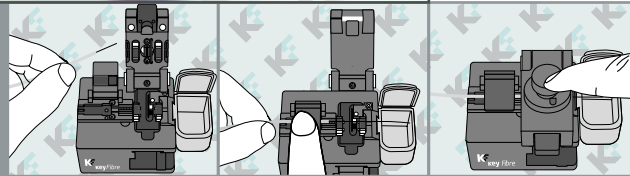
- FTTx Systems.
- LAN, WAN and Metro Networks.
- Data Centers
- Networking Monitoring
- Telecommunication

Features

- Bi-directional Cleave
- Universal type fits 250 / 900 / 2.0 / 3.0 / Flat Cable
- Compact body and light weight
- Easy-to-Open (one hand operation)
- 48,000 fibres blade life
- Sharps box for waste fibre
- Clear ruler for easy alignment
- Simple maintenance
- Strong structure for stable performance
- Customization for special fibres

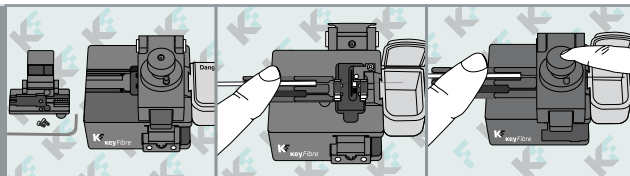
KeyQuick®
Field Installable

ASSEMBLY PROCEDURE for 250 um & 900 um



Open and place the fibre Close holder cover Push button

ASSEMBLY PROCEDURE for 2mm,3mm and FTTH Flat Cable



Disassemble Cleaver ruler Place Ruler KQ10/20 Push button



Ruler KQ10 Ruler KQ20

Suitable for KeyCleave

Specifications

| | |
|---------------------|--------------------------------|
| Application fibres | Silica Optical Fibre |
| Bare fibre diameter | 125um |
| Cleaving angle | 0.5° with Single Fibre |
| Blade life | 48.000 Times |
| Blade positions | 16 Rotating Positions |
| Dimensions | 88mm (L) * 61mm (W) * 65mm (H) |
| Weight | 0,300 Kg |

| Part Number | Description | Fibre Size | Pieces per Box | Box size (cm) LxDxH | Box Weight(Kg) |
|--------------|-----------------------------|--|----------------|---------------------|----------------|
| FM-FOA-CLU10 | Universal Fiber Cleaver | 250um / 900um / 2.0mm / 3.0mm / Flat Cable | 1 | 9,5 x 6,5 x 7,5 | 0,30 |
| FM-FOA-BCL10 | Replacement Blade For CLU10 | N/A | | | |
| FM-FOA-AT | Allen Tools | | 1 | | |
| FM-FOA-R10 | Ruler for KQ10 | | 1 | | |
| FM-FOA-R20 | Ruler for KQ20 | | 1 | | |