



KeyQuick® KQ10

In recent years the data communication capabilities supporting the Enterprise and Data Center markets have been expanding at breakneck speed. Fibre Optic Connector SC are commonly used in fibre optic backbone and horizontal application to provide high-speed data transmission. One of the most important consideration of KeyQuick® 10 is the excellent performance, and the easy to be assembled at the installation site by workers. Without the need of tools, our connector is accessible to be assembled by everyone without any special skill sets. The transparent body enables immediate splice verification by our Visual Fault Locator. The splicing method is as simple as aligning the V-groove and sliding to tie-up the fibre. The "Sliding and V-groove Tie-up" splicing method is possible to clamp fibre and coated fibre with just a single part number. The qualification tests results ensure the quality of our products subjected to severe mechanical and environmental conditions.



Ruler KQ10



Applications

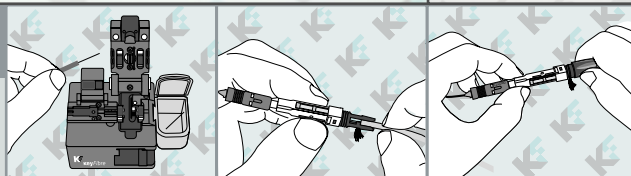
- FTTx Systems.
- LAN, WAN and Metro Networks.
- Data Centers
- Networking Monitoring
- Telecommunication

Features

- Universal for 250um / 900um / 2.0mm / 3.0 mm / Flat Cable.
- Pre-polished connector
- No epoxy required
- No Tool or jig required
- Transparent body for immediate connecting confirmation
- 30 seconds for connecting
- Mean Insertion Loss 0.1 dB
- Releasable after connecting
- Customization for other fibres
- UL 94-V0. KeyQuick® 10 can pass the Underriters Laboratory (UL) Standard 94 Flammability Test

KeyQuick®
Field Installable

ASSEMBLY PROCEDURE



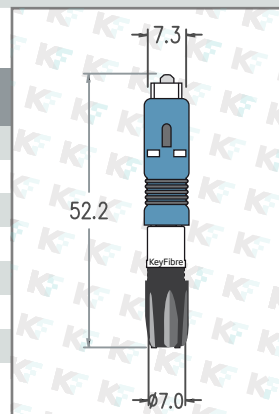
Strip and cleave

Insert and press

Fit the boot

Specifications

Cable Size	250um/900um/2.0mm/3.0 mm/FTTH Flat Cable
Assembly Time	30 seconds (after fibre preparation)
Insertion Loss, Typical	Under 0.3 dB
Return Loss	PC -55dB Typical // APC -60 dB Typical
Pull Strength (KGF), Typical	Universal: 0.5kgf(900um); 6kgf(3.0mm); 2kgf(Flat Cable)
Operating Temperature (°C)	-40 ~ +75
Materials	Engineering Plastics & Index matching gel (IMG)



Part Number	Description	Housing color	Boot color	Pieces per Box*	Box size (cm) L x D x H	Box Weight(Kg)
C-KQ10-SCA	KeyQuick® SC APC SM Connector, Universal G652D 900um, 250um, 2.0mm, 3.0mm, FTTH Flat	Green	Black	50	20,5 x 16,5 x 6	0,30
C-KQ10-MM	KeyQuick® SC UPC MM Connector, Universal 62,5/125 900um, 250um, 2.0mm, 3.0mm, FTTH Flat	Beige	Black	50	20,5 x 16,5 x 6	0,30
C-QK10-OM3	KeyQuick® SC UPC MM Connector, Universal 50/125 OM3 900um, 250um, 2.0mm, 3.0mm, FTTH Flat	Clear Blue	Black	50	20,5 x 16,5 x 6	0,30
C-KQ10-OM4	KeyQuick® SC UPC MM Connector, Universal 50/125 OM4 900um, 250um, 2.0mm, 3.0mm, FTTH Flat	Aqua	Black	50	20,5 x 16,5 x 6	0,30
C-KQ10-SC	KeyQuick® SC UPC SM Connector, Universal G652D 900um, 250um, 2.0mm, 3.0mm, FTTH Flat	Blue	Black	50	20,5 x 16,5 x 6	0,30
FM-FOA-R10	Ruler KQ10					

* Box = 50 Connectors + 50 Pieces of 0,9 tube (applicable for 250/900um) + 50 Pieces of 2,0 tube (applicable for 2mm fibre)

KEYFIBRE NETWORK COMPONENTS S.L.U. Corporate Headquarters: PO Box 277, 46190 Valencia SPAIN. Tel +34 962 779 426. Fax +34 962 779 571. info@keyfibre.com. LEGAL NOTICE: KeyFibre reserves the right to improve, enhance, and modify the features and specifications of KeyFibre® products without prior notification. Key-Quick® is a registered trademark of KeyFibre Network Components S.L.U. (application in process) The intellectual property of all contents, both text and pictures, published in this website belong to KeyFibre® or their respective owners. Prohibited the use and handling (total or partial) of our content in any media, including magazines, books and web pages, without the prior written permission of the ownership. KeyFibre reserve the right to take legal action against violators. All rights reserved. Published in SPAIN. Issue 1 / May 2011