



keyFibre

KF2000 Boxes OTB (Outdoor use)

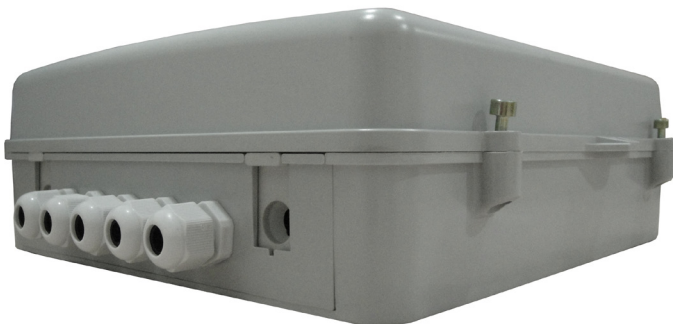
KF2002 FTTX TERMINAL BOX

Description

An excellent solution for FTTX projects providing mechanical protection for fiber management which includes the functions of splicing, patching and passive component integration. These boxes are typically mounted on walls inside/outside the customer's premises in the termination part of the access network.

Applications

- Applicable for the FTTX project and provide mechanical protection for fiber management system that includes the functions of splicing, patching and passive component integration.
- The boxes are typically used on walls inside/outside the customer's premises in the termination part of the access network.



Features

- High quality engineering plastic construction.
- Rated to IP65, available able for indoor or outdoor.
- Hinge structure with two screw lock and one standard lock hole.
- Flip design for the splice tray, easy for operation.
- Maximum 24pcs SC adapters are applicable.

Specifications

TYPE	DIMENSION (MM)	CABLE PORTS	NUMBER OF THE TRAYS	SPLICE CAPACITY OF EACH TRAY	SPLICE CAPACITY OF EACH TRAY
FM-OTBO-KF2002-XX-H1	265×300×78	Max. 6	Max. 5	12f (single layer) 24f (double layer)	Max. 24
FM-OTBO-KF2002-XX-H2	265×300×90		Max. 6		



keyFibre

KF2000 Boxes OTB (Outdoor use)

KF2002 FTTX TERMINL BOX

Ordering Information

Part number □ FM-OTBO-P -KF2002-PxRx-Hx-x-x-x-x

Ej: FM-OTBO-P -KF2002-P1R1-H1-48-2-24-SC

1 - Port Type:

Px type, PG connector, uncut cable not applicable (see table)
Rx type, Rubber grommet, loop-through cable is applicable.
PxRx type, both PG and rubber grommet used, uncut cable permitted.

2 - Height Type:

H1 type, the height of the box is 78mm, maximum 5pcs tray allowed.
H2 type, the height is 90mm, maximum 6pcs tray allowed.

3 - Splice capacity requirement:

48, 48 fibres need to splice as per the customer requirement.

4 - Number of the Splice tray:

2, 2pcs splice trays needed as per the customer requirement.

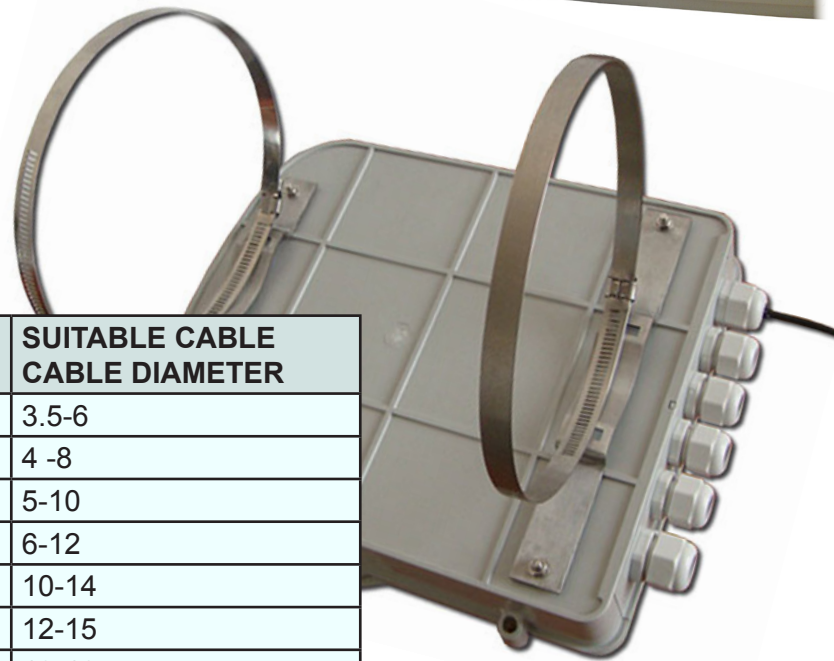
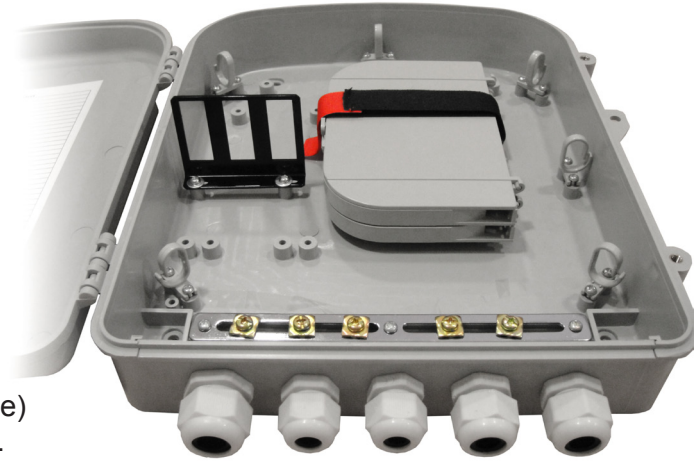
5 - Adapter required:

24pcs.

6- Adapter type:

SC

For P type: Unit: mm



TYPE P	ITEM N°	SUITABLE CABLE CABLE DIAMETER
P1	PG-07	3.5-6
P2	PG-09	4 -8
P3	PG-11	5-10
P4	PG-13.5	6-12
P5	PG-16	10-14
P6	PG-19	12-15
P7	PG-21	13-18



keyFibre

KF2000 Boxes OTB (Outdoor use)

KF2002 FTTX TERMINAL BOX

For R type (Rubber grommet, loop-through):

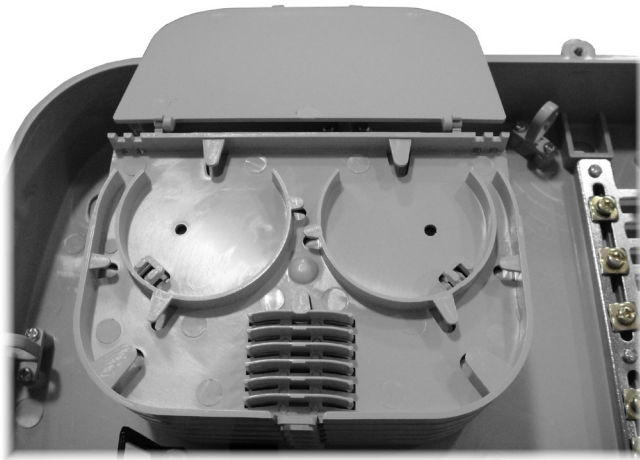
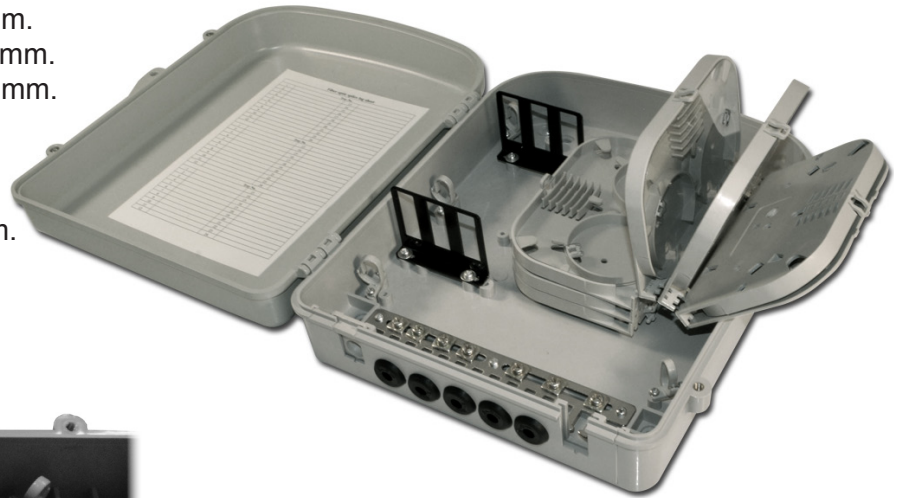
1) For the loop-through cables, there are three options for the customer,

- Port 1 suitable diameter is $\Phi 5 \sim \Phi 9$ mm.
- Port 2, suitable diameter is $\Phi 6 \sim \Phi 11$ mm.
- Port 3, suitable diameter is $\Phi 8 \sim \Phi 15$ mm.

2) For the branch cables,

- Port 1 suitable diameter is $\Phi 5 \sim \Phi 9$ mm.

3) For the drop cables,



- Port 4 suitable diameter is $\Phi 3 \sim \Phi 5$ mm.
Each rubber grommet holds

6pcs drop cable ports.

**KEYFIBRE NETWORK
COMPONENTS S.L.U.**

Corporate Headquarters:

PO Box 277
Villamarchante 94,
46190 Valencia SPAIN
Tel. +34 962 779 426
Fax +34 962 779 571
info@keyfibre.com

LEGAL NOTICE:

KeyFibre reserves the right to improve, enhance, and modify the features and specifications of KeyFibre' products without prior notification.

Key-Quick® is a registered trademark of KeyFibre Network Components S.L.U. (application in process)

The intellectual property of all contents, both text and pictures, published in this website belong to KeyFibre® or their respective owners.

Prohibited the use and handling (total or partial) of our content in any media, including magazines, books and web pages, without the prior written permission of the ownership. KeyFibre reserve the right to take legal action against violators.

All rights reserved. Published in SPAIN. Issue 1 / May 2011