

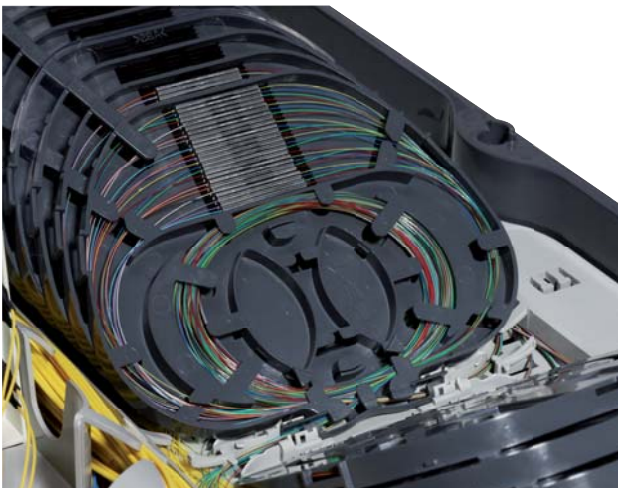
BEP – Building Entry Point

ACS – Advanced Cassette System

The Advanced Cassette System (ACS) is a modular and easy to use fiber cassette system. The ACS embraces with its unique module concept by the fact that it is based on only a few components that can be put together without tools. Basically 3 types of cassettes are available to support the fiber infrastructure on a high level.

- SingleCircuit management (SCM) for specialised applications with higher handling and reliability requirements allows individual circuits to be managed without disturbing others.
- MultiCircuit management (MCM) for mass fiber deployment such as FTTH allows simple storage and fiber splicing for up to 24 splices in one cassette.
- Splitter cassette for an easy integration of passive devices such as splitters or CWDM elements into the network.

Access to the fibers is possible by folding away neighbouring cassettes, all previously spliced fiber remain undisturbed. The ACS-SCM cassette has the same dimensions like the ACS-MCM cassette but fibers can be spliced on the front- and the back side.



Features

- Comprehensive fiber containment
- High level of operational security
- Open fiber guidance throughout
- Full bend radius protection
- Cable structure independent
- Integrated cross-over field
- Storage position for unused fibers
- Robust hinge system

Attribute	ACS-SCM	ACS-MCM	ACS-SPC
Dimensions (B x L x H)	145 x 109 x 8 mm	145 x 109 x 8 mm	145 x 122 x 16 mm
Splicing capacity: 250 µm	4 + 4	24	24
900 µm	2 + 2	8	8
Smallest bend radius	27 mm		
Material:	PC / ABS		
Color:	RAL 9002 grey white	RAL 7024 graphite grey	RAL 7040 window grey

BEP – Building Entry Point

ACS – Advanced Cassette System



ACS cassette	Unit	Item no.
ACS - SCM (Single Circuit cassette)	1	84123616
ACS - MCM (Multi Circuit cassette)	1	84123617
ACS - SPC (Splitter cassette)	1	84123618

Scope of supply:

ACS cassette

Material:	PC / ABS
Colour:	PC/ABS
	SCM grey white
	MCM graphite grey
	SPC window grey

Cover for ACS cassette	Unit	Item no.
Small cover fitting to SCM	1	84123616
Large cover fitting to MCM,SCM,SPC	1	84123617

Scope of supply:

Cover

Material:	PA
Colour:	black

Splice protection holder MCM	Unit	Item no.
Sandwich splice protection holder 24-way	1	84103969
Heat shrink splice protection holder 24-way	1	84123618

Scope of supply:

Splice protection holder

Material:	PA
Colour:	black

Splice protection holder SCM	Unit	Item no.
Sandwich splice protection holder 6-way	1	84003481
Heat shrink splice protection holder 4-way	1	84088989

Scope of supply:

Splice protection holder

Material:	PA
Colour:	black

The ACS product portfolio will be available about April 2011